

RAINFOREST

BY JULIA GOLDMAN

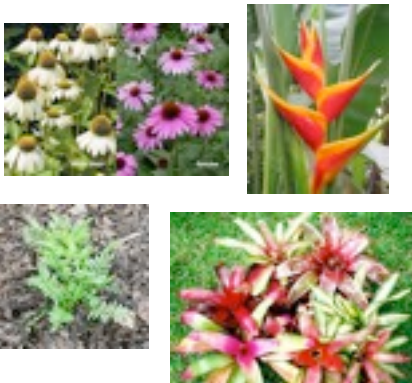
IN THE RAINFOREST

You are in a forest, then you hear a tree fall: Boom! What do you do?

So many trees are being cut down in forests all over the world every day. The main reasons are logging and mining. Across the world a forest the size of New York is being cut down each day. Deforestation (trees being cut down) is not only affecting and hurting trees, but is also affecting animals.

WHERE ARE RAINFORESTS?

Rainforests are located all over the world, mostly around the Equator (the equator is very hot) and is located around the center of the world. Missouri Botanical Garden (MBG) stated that 57% of Rainforests are in Latin America (a lot in Latin America). About one third of Rainforests are in Brazil. There are also some Rainforests in West Africa and the Pacific Islands. About 6% of land all over the world is Rainforests.



These are plants from the Rainforest and forest.

WHAT ANIMALS LIVE IN THE THE RAINFOREST?

There are a lot of species of animals in the Rainforest. The website Rainforestanimal.net said that an **estimate** (a smart guess) is that about one half of the world's species live in the Rainforest. Some reptiles are the caiman, the green anaconda, the green iguana, and the poison dart frog. Some of the mammals are bats, pumas, sloths and tapirs. Some birds are the macaws, toucans and the anningas.

WHAT PLANTS ARE IN THE THE RAINFOREST?

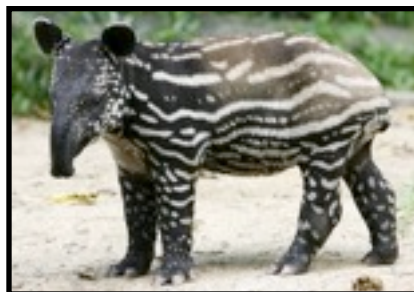
The website, Rainforestanimals.net stated that a lot of the world's medicines, about 25%, are from Rainforest plants. Some examples of the plants and what they do are:

Plant	Remedy
Valerian	takes away pain
Coneflower	helps you fall asleep
Eggplant	helps skin cancer

TOO MANY TREES AND ANIMALS AFFECTED!

Did you know that so many trees in the rainforest are being cut down every day? Some of the reasons are logging, mining, cattle ranching, farming, and oil and gas drilling. Answers.com stated that deforestation started over time when we invented better tools to clear forests quicker. Deforestation did not happen in one day it happened slowly over time.

Deforestation is also leading to animals and whole species being killed. AnimalPlanet.com stated that the passenger pigeon is extinct because of hunting and deforestation. About 137 species are becoming extinct, lost forever, every day. About 50,000 species a year. So many plants and animals live in the rainforest. Rainforests grew bigger and better over thousands of years but now they are all being cut down.



This is the Tapir, it will become extinct soon if we don't save it!



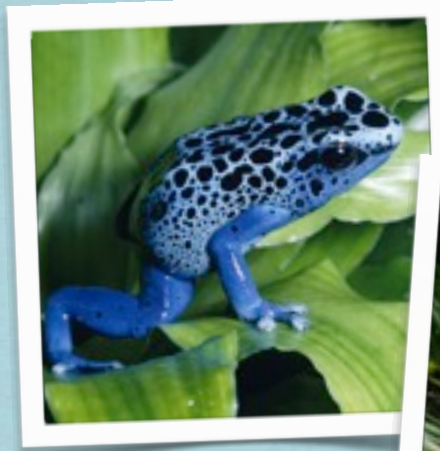
This bird is the Passenger Pigeon. It is extinct because of deforestation.

All forests and Rainforests in the world now only cover 30% of land. Rainforests cover only 6-7% of the land. Farmers cut down so many trees to grow crops and according to Answers.com the soil is a lot richer and better with trees. So if you took more time planting and only cleared a few trees at a time in one spot, your crops would be better because of the soil and worth more. Also, loggers illegally log (not allowed to log) and they cut down so many trees. Loggers clear the land so people can build house. The trees are used for wood and paper.

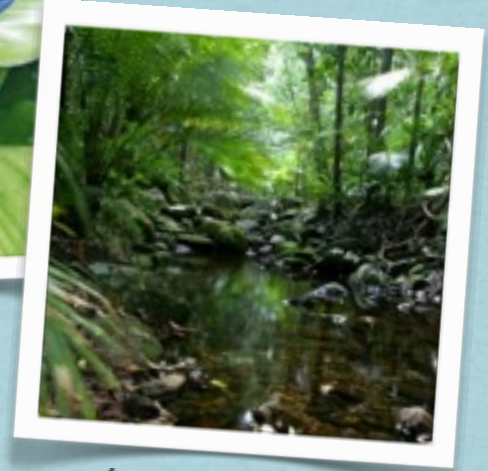
HOW YOU CAN HELP!

You can help too! You can plant trees. You can use fewer things from the Rainforest and forest. You should not waste and use a lot of paper and you should recycle. Eat fruits and nuts from the Rainforest so farmers would rather keep the Rainforests than clear the trees to grow other crops.

AROUND CAMPUS



* This is the Blue Poison Dart



This is the Rainforest.

