

# Fly Through A Long Lifecycle

BY:  
KATIE  
ELIAS

## Butterfly



flower

**Food? Eating Or Drinking**  
Butterflies don't eat at all. Instead of eating they get their nutrients from drinking. They have a long narrow tube in their mouth like a straw. They land on a flower nearby and drink the nectar like hummingbirds. But make sure to keep the bees away. Usually many kinds of butterflies feed together on small puddles on the ground or wet areas on grass or leaves. But ew people step in puddles noone would want to drink that!



water puddle



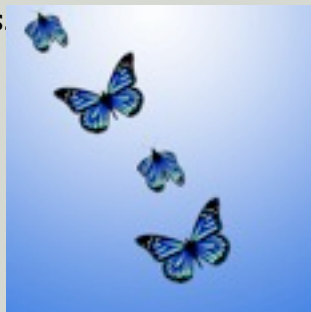
**Ew!**

Before butterflies get their wings they start off as a caterpillar on the ground. After a butterfly hatches from its egg its spends some of its time eating. It focuses on that to grow as much as it can in a short period of time (it usually eats leaves). To become a butterfly a caterpillar first sheds its skin then digests itself, but certain groups of its cells survive. How do you digest yourself imagine that, disgusting. Then it hangs of a branch or leaf. Then it spins itself a shiny cocoon or molts into a shiny chrysalis. It must get dizzy! A butterfly usually stays in its cocoon for 5 weeks tops, and it doesn't stay high in a tree because it doesn't want to attract predators.



**Fly**

Slow butterflies fly 5mph or a little more. During the migration monarchs have been seen flying over tall buildings. Butterflies have a very resilient muscle, especially in their throax. This strong muscle forces their wings to move on a fulcrum basis {cool}. The wings on a butterfly are colorful they have lots of designs which can sometimes help them blend in to any everyday object. Someone would probably want those wings.



# Spread Your Wings: Inches

American Snout:	1 ½
Giant Swallow:	5 ¼
Julia:	3 ½
Milbert's Tortoiseshell:	2 5/8
Monarch:	3 ½
Painted Lady:	2 ½
Pearl Crescent:	1 5/8
Postman:	2 ½
Red Admiral:	3 1/8
Saturn:	4 ¼
Tiger Swallowtail:	3 ¾
Viceroy:	2 7/8



# Take A Vacation

According to monarch butterfly migration website it tells how all butterflies are cold blooded they simply cannot stand the cold weather. So they have to travel someplace warmer, don't blame them. They also need to find a good food source this all depends on the weather. Cold: no hot: yes.