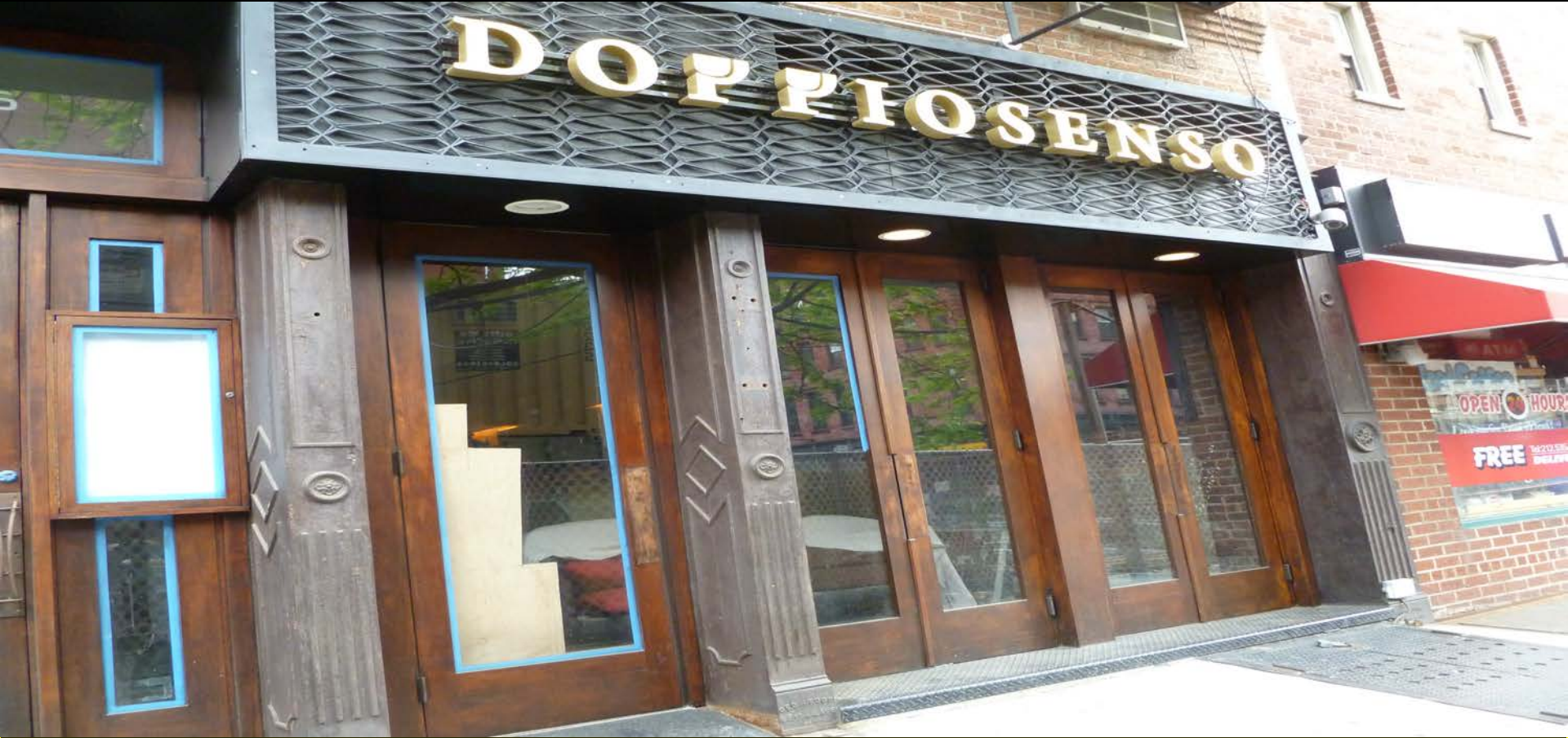


# **The Negative Affects of The Second Avenue Subway**

**By: Kent Nishizawa**



The construction of the Second Avenue Subway has been affecting many people negatively. Businesses are going out of business due to the loss of revenue. Restaurants are losing customers and will probably not get them back. Also, the construction is causing many problems for pedestrians. There are now many dangers when you walk along Second Avenue.



Before the subway construction Big Daddys used to be very popular

A lot of businesses are losing revenue and may go out of business. According to [www.dnainfo.com](http://www.dnainfo.com), there are many businesses that are trying to get the MTA to reimburse the lost revenue but they will not do it. Many of these businesses cannot afford to stay open even though after the Second Avenue Subway is built they would gain a great amount of revenue. Also, since the Second Avenue Subway construction began many businesses are gone from the neighborhood.



On one occasion my family and I were looking forward to eating at a restaurant that I had not been able to go to for a while. We were all walking to the restaurant when I noticed that the windows were covered. As we got closer I noticed there was a rental space available sign. I was disappointed that I couldn't go. I also noticed that a Rainbow store on 94 and 2<sup>nd</sup> went out of business due to lack of customers. People couldn't get to the store because of the subway construction.

between 82nd & 83rd streets  
during construction

**Wa Jeal**

1588 2nd Ave tel: 212 396 3339

**The Penrose**

1590 2nd Ave tel: 212 203 2751

**MC Hair Salon & Spa**

1592 2nd Ave tel: 212 988 5252

**Promises Fulfilled**

1592 2nd Ave tel: 212 472 1600

**Healthalicious**

1594 2nd Ave tel: 212 988 8700

**Firenze Ristorante**

1594 2nd Ave tel: 212 861 9368

**Big Daddy's**

1596 2nd Ave tel: 212 717 2020



These community businesses continue to serve customers until MTA Capital Construction starts the Second Avenue Subway. They are publicly not having the opportunity and the entire site. Visit [www.mta.com](http://www.mta.com) for more info.



The MTA and storeowners are putting up signs to try and make the stores more noticeable, but the signs are not working. Many people are avoiding Second Avenue so the restaurants and stores are not attracting customers. I interviewed Mr. Caisaguano, the owner of the restaurant Firenze and asked him how the second avenue subway was affecting his business. He responded, "That he has lost customers due to the construction." He went on to say, "People used to be able to park right in front of the restaurant, but now they have to find parking. The noise and construction are also a problem."

The Second Avenue Subway is causing problems for pedestrians too. The sidewalks were cut to make space for the construction, which makes the sidewalks more crowded and dangerous to walk on. People have a greater chance to fall on to the concrete street and get hit by a car. Also, there are many places where you can't see cars when you are crossing. The construction is obscuring your vision of cars coming, which makes it dangerous to cross. For example on the corner of 83rd street and Second Ave, pedestrians are only able to cross on the south side of the street. Recently there was a car accident between two cars as the driver's vision was obstructed. If a pedestrian was in the way it might have been a terrible accident.

Also the construction is causing a lot of noise and a lot of pollution. Whenever I walk by, there are jackhammers causing a tremendous amount of noise. The dust and debris that come from the construction are awful and unhealthy to be breathing in. According to The New York Post ([www.nypost.com](http://www.nypost.com)), "Residents are claiming that since the MTA banned blasting after 7:00 PM, the drilling and jackhammers have gone on late at night." In an interview with Leslie Rosen, a resident of Second Ave, she said, "The first night I fell out of bed. It scared me to death." Jill Wallach, who lives on 72<sup>nd</sup> and Second said, "Recently a noisy construction job outside went on for 3 hours beginning at 3:00 am." These are just some of the troubles residents must deal with. Although having a brand new subway line that will help with the over crowding of the Lexington Avenue subway, the current negative impacts are horrible. Residents and businesses are suffering terribly. Many businesses have closed for good and many more will probably follow suit. For the residents living along Second Avenue, the noise and debris have made living conditions unbearable. The adverse affects will impact Second Avenue for many more years until the subway is complete.

